

# ILSLEY 100 PROJECT PRESENTATION



APRIL 15, 2024



# ILSLEY 100 PROJECT PRESENTATION AGENDA:



- Ilsley Mission, Library Functions
- Ilsley Library Need Statement
- Project History
- Explanation of Design Solution
- Total Project Budget
- Funding Summary
- Timeline Review
- Temporary Library Location
- Informational Video
- Questions and Answers



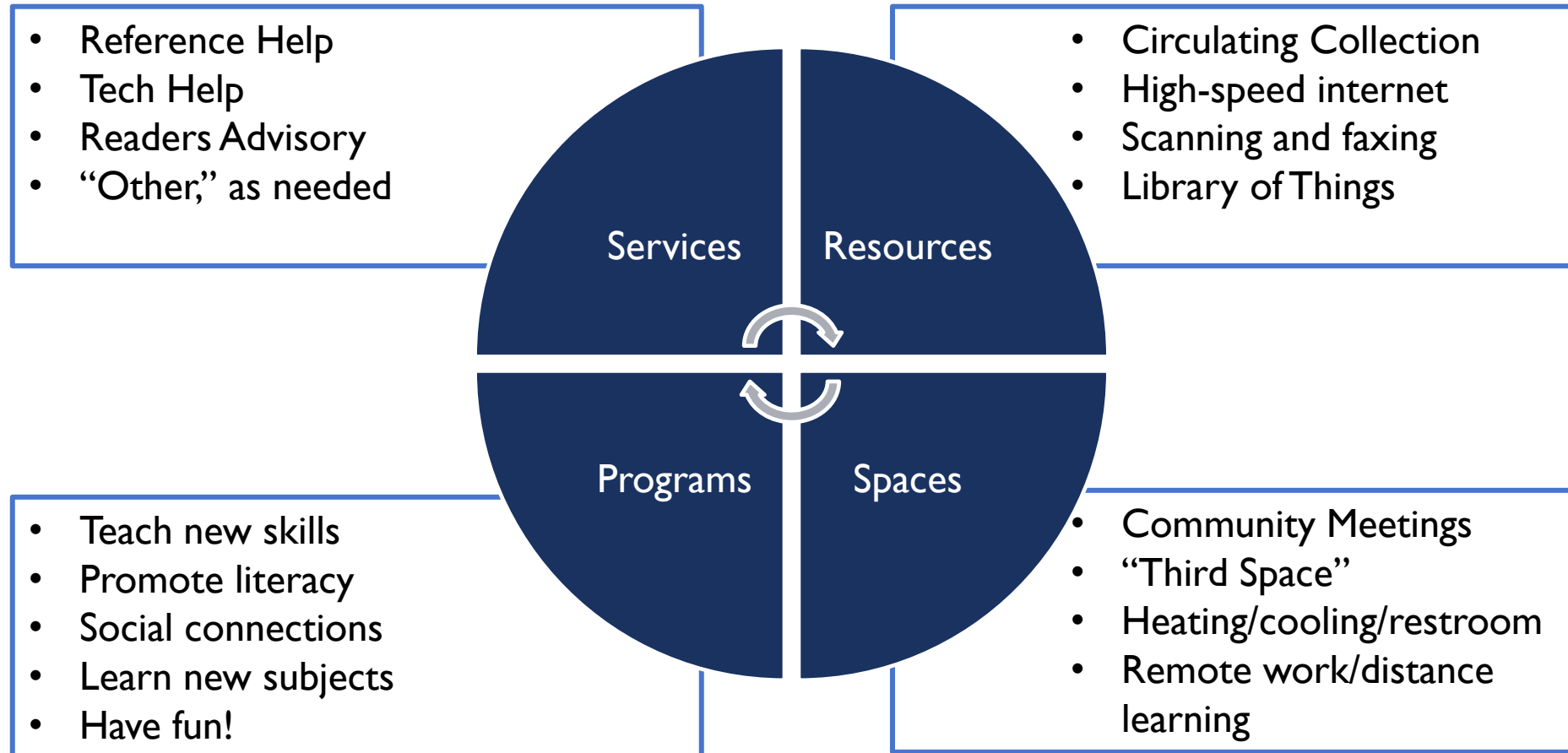
# ILSLEY PUBLIC LIBRARY MISSION:



“The Ilsley Public Library system enriches lives and builds community connections by providing engaging and accessible programs, services, resources, and spaces that meet evolving community needs. Library staff invite everyone in to learn, create, and collaborate. The library is a safe and friendly environment where everyone belongs.”



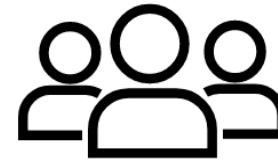
# WHAT DOES THE LIBRARY DO?



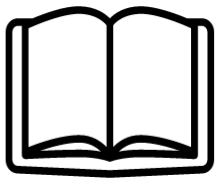
# WHO USES THE LIBRARY?



**91,510** visits



**587** programs



**126,328** checkouts



**1,415** reference  
questions



**4,149** cardholders



**11,736** wi-fi uses



Meeting rooms were booked **646** times

# WHY DO WE NEED A NEW LIBRARY?

- Over the library's long history our mission has expanded and use has skyrocketed, but our facilities have failed to keep pace.
- The current building is too small and inflexible to accommodate our programs, services, and collections.
- Entrances are not accessible; poor sightlines pose social safety risks; heating and cooling systems are failing; and the elevator is temperamental.



The library's primary entrance is not accessible; not welcoming; and provides unsupervised access to single occupancy restrooms.

# PROJECT HISTORY:

- 2007: Library Study Committee
- 2014-2017: Library Building Committee (gbA plan)
- 2018: Tell Me! Focus Groups
- 2019: Library Trustees decide to pursue new plan
- 2021: Renovation/Expansion Working Group
- 2022: Ilsley 100 Project Team



Schematic design Open House, Dec. 2023.

# ILSLEY 100 PROJECT TEAM:

- Joe McVeigh, Ilsley Library Board of Trustees
- Amy Mincher, Ilsley Library Board of Trustees
- Dan Brown, Middlebury Selectboard
- Barbara Doyle-Wilch, community member
- Jim Gish, community member
- Ruth Hardy, Vermont State Senator
- Farhad Khan, Middlebury Selectboard
- Ken Perine, community member
- Judith Harris, Clerk of the Works
- Beth Dow, Liaison to the Town Admin
- Dana Hart, Library Director

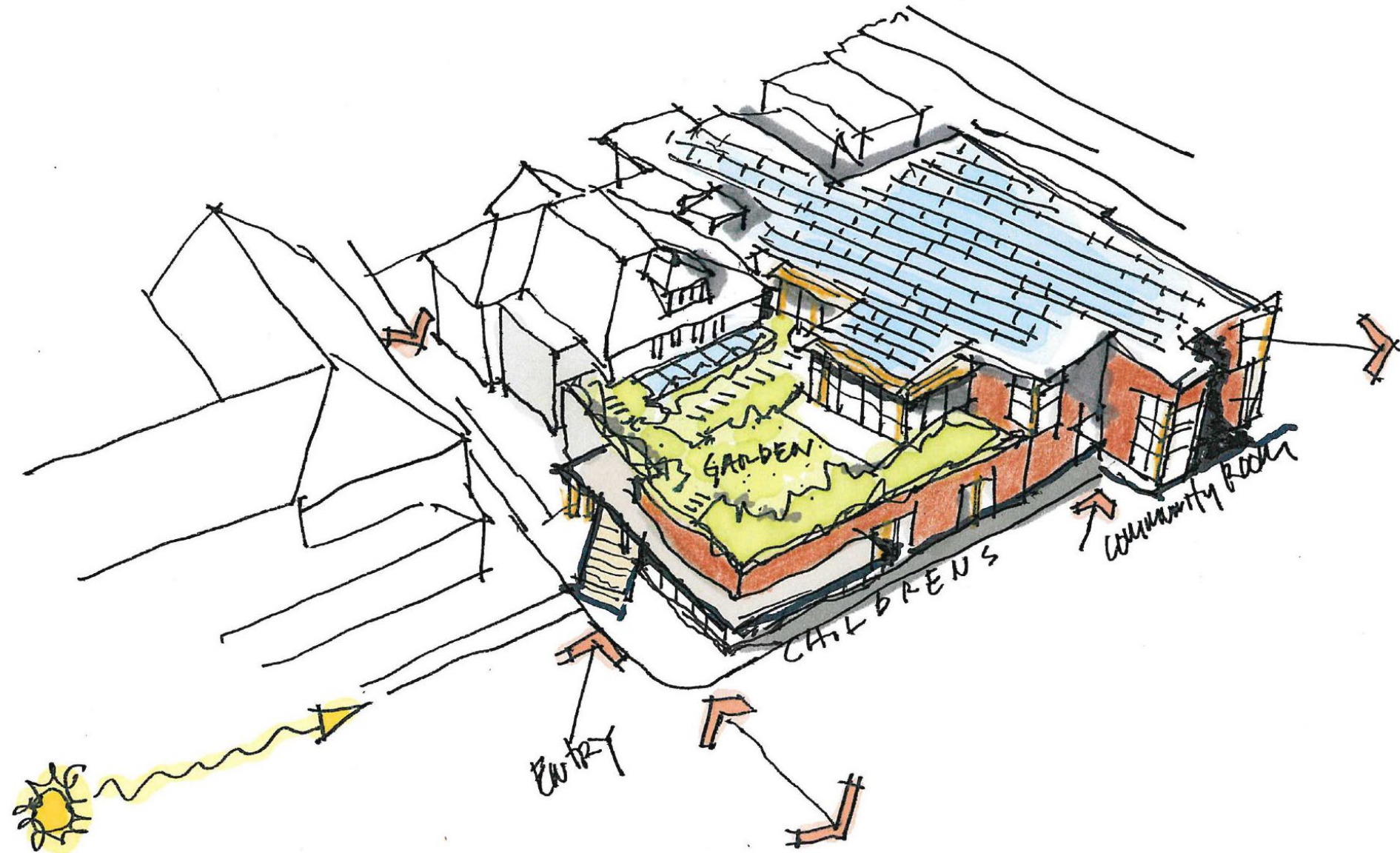


Members of the Ilsley 100 Project Team meet with community members at the 2022 Downtown Block Party

# EXISTING CONDITIONS



# CONCEPT SKETCH



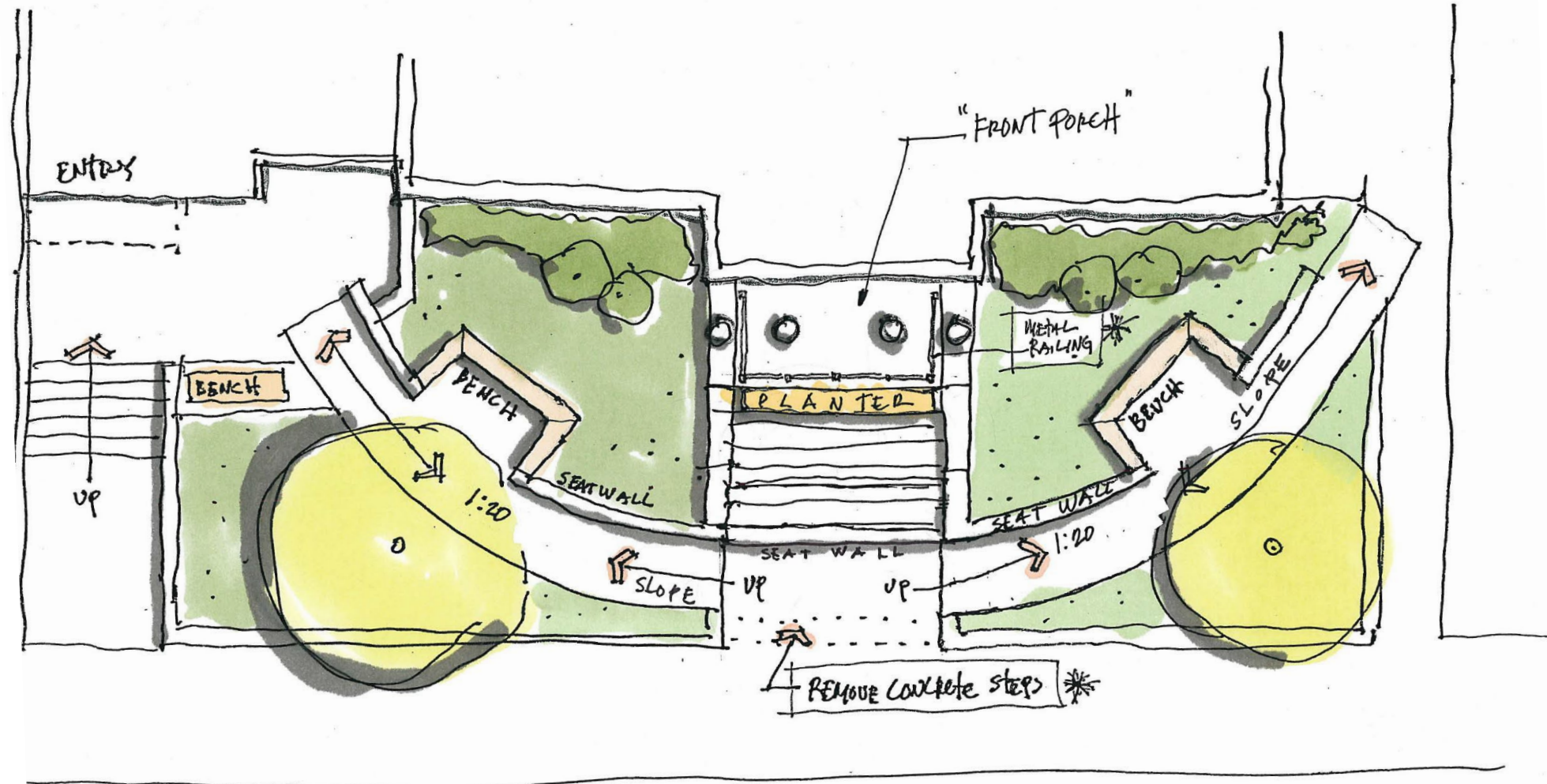
# CONCEPT SKETCH



# SITE PLAN



# MAIN STREET PARK SKETCH



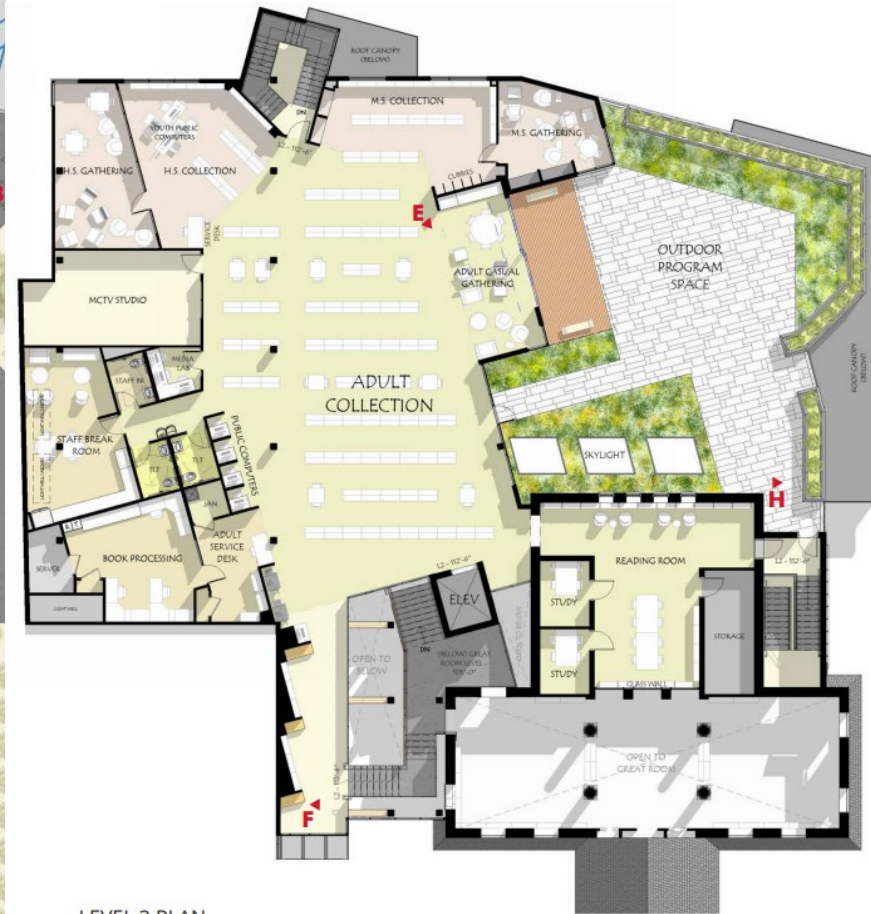
# CONTEXTUALLY APPROPRIATE SCALE & MASSING



# FLOOR PLANS



Ground Floor



LEVEL 2 PLAN

Second Floor



Lower Level

# MAIN STREET ENTRANCE



# ENTRANCES WILL WELCOME ALL



# HISTORIC 1924 BUILDING WILL BE PRESERVED



# WELCOMING LOBBY AND MAIN CIRCULATION DESK



# EXPANDED & DEDICATED CHILDREN'S SPACE



# AREAS FOR REMOTE WORK, DISTANCE LEARNING & MORE



# OUTDOOR PROGRAMMING SPACES



# OUTDOOR PROGRAMMING SPACES





# TOTAL PROJECT BUDGET SUMMARY



Professional Fees, Sitework, Construction Costs	\$15,350,675
Owner Costs*	\$1,644,324
<b>Total Project Budget</b>	<b>\$16,995,000</b>
Tax Credits and Rebates	(\$552,064)
<b>TOTAL PROJECT COST</b>	<b>\$16,442,936</b>

\*Including but not limited to insurance, permits, moving costs, furniture, fixtures, and equipment, legal expenses and project contingencies



# FUNDING PLAN SUMMARY



Capital Campaign Goal	\$6,000,000
State and Federal Grants Goal	\$2,000,000
Private Foundations Grants Goal	\$55,000
Local Option Tax	\$4,000,000
Municipal Bond**	\$4,387,936
<b>TOTAL PROJECT FUNDING</b>	<b>\$16,442,936</b>

\*\*The tax impact of a 20-year bond for \$4.5 million would equal \$39 per \$100,000 of assessed property value annually. The tax impact of a 30-year bond for \$4.5 million would equal \$32 per \$100,000 of assessed property value annually.



# TIMELINE



- May 6 ..... Bond information meeting
- May 7 ..... Bond Vote
- 2024 ..... Capital Campaign ongoing
- 2024 ..... Design/construction documents development
- Sept 2024 – Jan 2025 ..... Permitting
- Jan 2025 ..... Project out to bid
- Feb 2025 ..... Library moves to temporary location
- April 2025 ..... Construction begins
- July 2026 ..... Move into completed library

# TEMPORARY LIBRARY LOCATION

- The National Bank of Middlebury has generously donated the first floor of the Duclos building at 30 Main Street for the library's temporary location
- At the Duclos building, the library will be able to continue offering access to a reduced circulating collection and ILL; WiFi and public computing; spaces to read, work, and play; and limited in person programming
- Additional programs will take place in community meetings spaces around town
- The bulk of the collection will be put in storage
- Sarah Partridge Branch Library will continue to operate as usual



## THANK YOU!

Questions can be directed to:  
Dana Hart, Director  
[dana.hart@ilsleypubliclibrary.org](mailto:dana.hart@ilsleypubliclibrary.org)  
(802) 388-4098

